



International  
Organization for  
Standardization



GeM  
Government  
e Marketplace

**SARATECH**  
EQUIPMENTS

AN ISO 9001 : 2015 COMPANY

## FUEL FREE INCINERATOR

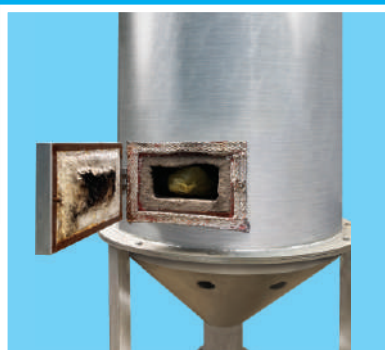
**Burn Waste Efficiently  
No Fuel, No Hassle !**



**DRY WASTE**



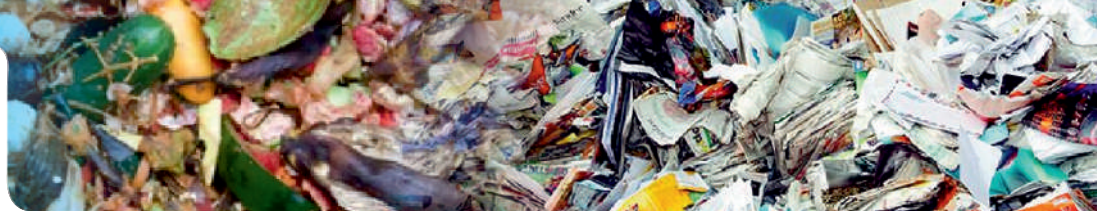
**WET WASTE**



Effective management of solid waste is vital for achieving environmental sustainability, with incineration serving as a key solution to waste disposal issues. This process entails the combustion of solid waste at elevated temperatures, which greatly decreases its volume while producing heat, gas, and ash. Incineration is especially beneficial for dealing with waste that cannot be recycled or composted, thereby reducing reliance on landfills and aiding in energy recovery. By transforming waste into usable energy, incineration enhances cleaner waste management practices and fosters a more sustainable future.

# FUEL FREE INCINERATOR

No Fuel, No Hassle !



## SALIENT FEATURES



SARATECH Fuel Free Incinerator burns DRY & WET waste.



Castable high thermal efficiency insulation for longer life



Stainless Steel Chimney for longer life



Heavy duty steel fabricated burning chamber



Available in 10 kgs to 50 kgs capacity

## TECHNICAL SPECIFICATIONS

GENERAL SPECIFICATIONS	MODEL - FFI 900	MODEL - FFI 90	MODEL - FFI 09
Capacity	50 kg per hour	25 kg per hour	10 kg per hour
Description	to destroy solid municipal waste by Burning process which cannot be Recycled or compost	to destroy solid municipal waste by burning process which cannot be recycled or compost	to destroy solid municipal waste by burning process which cannot be recycled or compost
Cylindrical chamber thickness mm	6 mm	5 mm	2 mm
Cylindrical chamber material	Mild steel with castable refractory material lining inside chamber to with stand temperature up to 1200°C	Mild steel with castable refractory material lining inside chamber to with stand temperature up to 1200°C	s s 304 with castable refractory material lining inside chamber to with stand temperature up to 800°C
Cylindrical chamber diameter primary chamber	700 mm	400 mm	300 mm
Cylindrical chamber diameter Secondary chamber	500 mm	250 mm	150 mm
Cylindrical chamber height primary chamber	900 mm	600 mm	500 mm
Cylindrical chamber height secondary chamber	500 mm	300 mm	200 mm
Upper cone height mm	400 mm	250 mm	200 mm
Lower cone height mm	400 mm	250 mm	200 mm
Inspection door height mm	150 mm	100 mm	100 mm
Inspection door width mm	250 mm	150 mm	100 mm
Ash door diameter mm	250 mm	100 mm	75 mm
Insulation material	Cerawool	Cerawool	Cerawool
Insulation material thickness mm	25 mm	25 mm	25 mm
Insulation material density(kg/m3)	60	60	60
Leg material	Mild Steel Epoxy Painted	Mild Steel Epoxy Painted	Mild Steel Epoxy Painted
Leg pipe diameter	100 mm	50 mm	30 mm
Number of legs	4	4	4
Height from ground mm	600 mm	400 mm	400 mm
Chamber volume	1 Cubic meter	0.5 Cubic meter	0.25 Cubic meter
Ladder & platform	Yes provided	Yes provided	Yes provided
Ladder & platform material	Mild Steel Epoxy Painted	Mild Steel Epoxy Painted	Mild Steel Epoxy Painted
Chimney material	S S 304	S S 304	S S 304
Chimney diameter mm	150 mm	100 mm	50 mm
Chimney thickness mm	2 mm	2 mm	2 mm
Effective height of chimney	10 meter	5 meter	3 meter
Pollution control device	Ceramic cloth filter with activated Carbon filter	Ceramic cloth filter with activated Carbon filter	Ceramic cloth filter with activated Carbon filter

